

SRS's TL 01 (Thumb Latch) sash lock is an updated version of the old Babcock Catch originally patented in 1880.

The double hung windows on my 1740 farmhouse use old sash locks, which may be antique Babcock locks. Several have broken thumb levers, so I decided to replace the broken locks with the SRS TL 01 lock.



Original broken lock



Lock removed



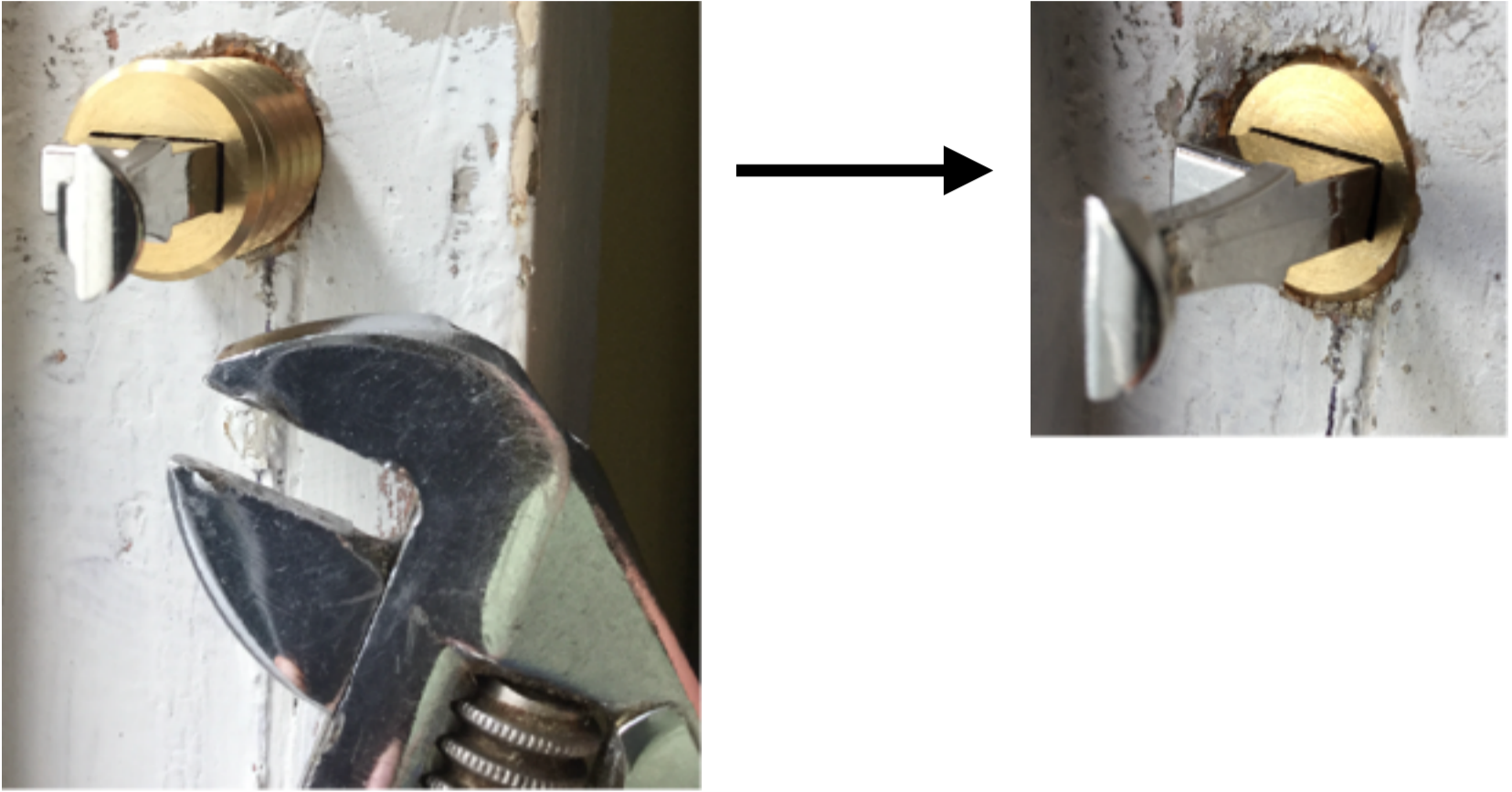
The hole in the frame was too large for the TL 01, so I decided to fill in the old hole and drill a new hole a few inches below the old lock's location.

With the window sash in place, I marked the edge of the sash at the planned vertical location of the lock. The horizontal center of the lock is $\frac{3}{16}$ " from the edge of the window. I marked this location as the center point of the hole to be drilled.

I drilled a new $\frac{3}{4}$ " hole at this center point using a $\frac{3}{4}$ " Forstner bit.



I placed the lock in the hole and tightened it to fit using a Crescent wrench.



I cut a new slot in the window sash using a 1/2" Forstner bit and chisel. I also cut a new slot in the sash stop, 1/8" deep and 3/8" wide. Then I reinstalled the window and sash stops. Only the thumb lever of the sash lock is visible.

