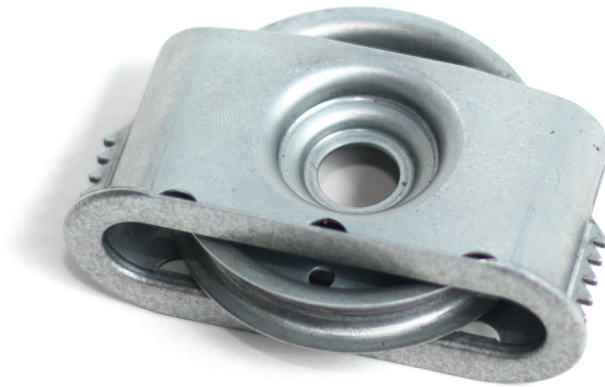




2" STAMPED STEEL SASH PULLEY



Materials: Stamped Steel

Faceplate: $1\frac{3}{64}$ " x $2\frac{15}{16}$ "

Finish: Zinc Plated Steel

PSS 200 Stamped Steel Sash Pulley

Economical PS 200 replaces pulleys frequently installed in mid-20th century, single glazed, residential windows. They are traditionally constructed using zinc plated steel with a round bottom sheave intended for use with #8 sash cord. Serrated edges at the top and bottom of the housing secure the pulley in the jamb.

Spec as: PSS 200